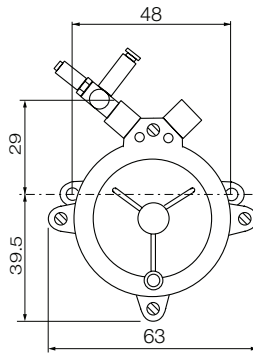


# Compressed Air

GMG

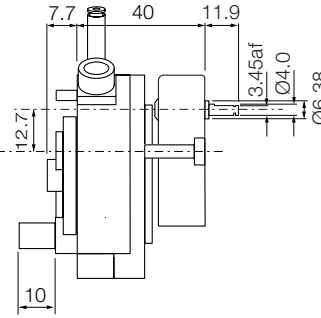
Issue 03

Units: mm

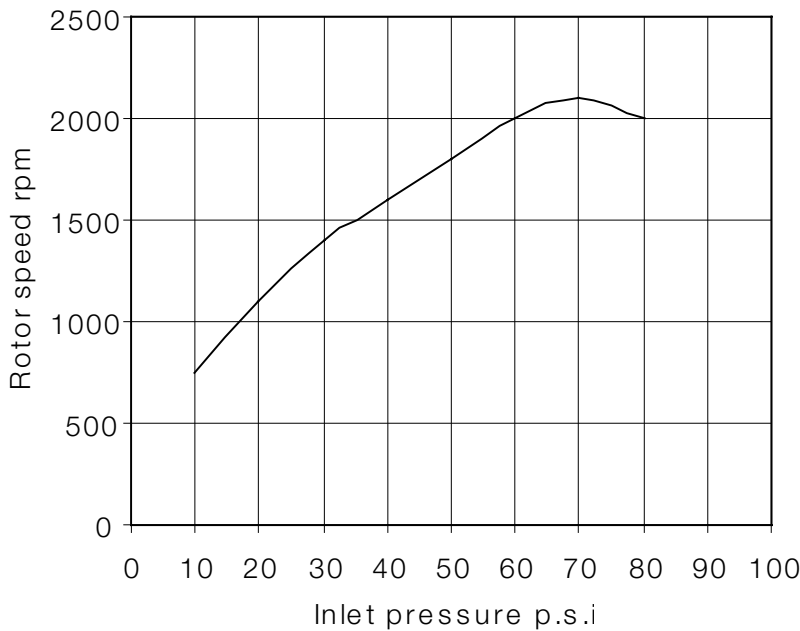


# Rotalink

Miniature Motors, Transmission and Control



Typical variation of speed with inlet pressure



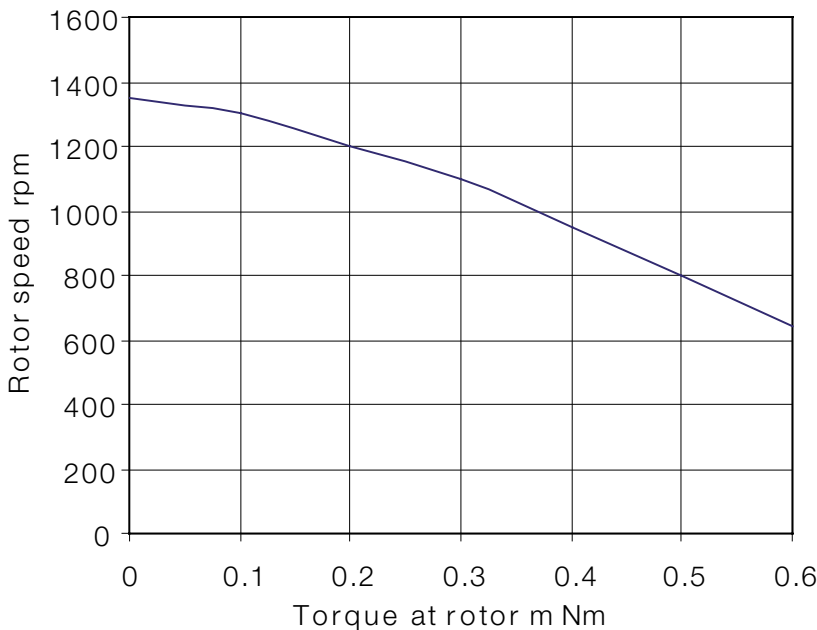
## General Specification

Gearbox Type 221  
 Air Input 1/8" bore plastic pipe  
 Exhaust Directly to atmosphere or through outlet port  
 Operating Pressure 25 psi (Standard)  
 100 psi (Maximum)  
 Air Supply Clean and dust free.  
 May contain traces of oil  
 Air Consumption at 25 psi, 0.5 standard cub.ft.per min. typical  
 Maximum Torque 490mNm at 25psi, 1rpm  
 Ambient Temperature 10°C to 65°C  
 Rotor Speed 1200±1% rpm nominal.  
 Average long term drift does not exceed 5%

## Performance

Typical Output Speeds 1 rev per:	
4 MIN	1 HOUR
6 MIN	16 HOUR
10 MIN	
20 MIN	

Typical variation of speed with torque



### Contact:

[www.rotalink.com](http://www.rotalink.com)  
[info@rotalink.com](mailto:info@rotalink.com)  
 T: +44 (0)1460 72000  
 F: +44 (0)1460 74278

Rotalink Limited  
 Cropmead, Crewkerne  
 Somerset TA18 7HQ, UK

[www.rotalink.com](http://www.rotalink.com)