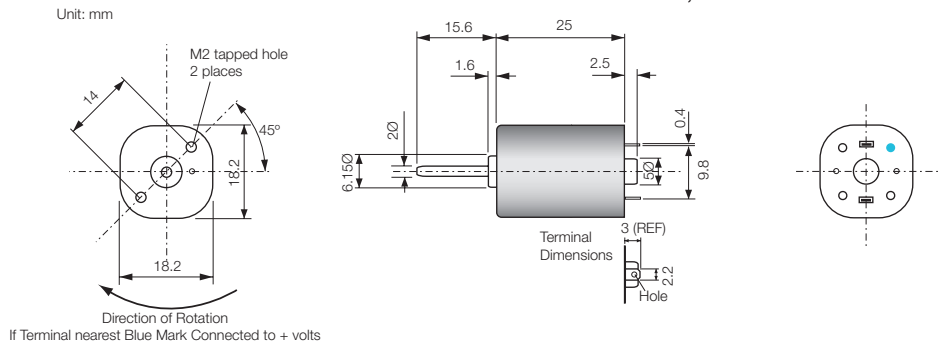


DC Motors

RE1825-1204

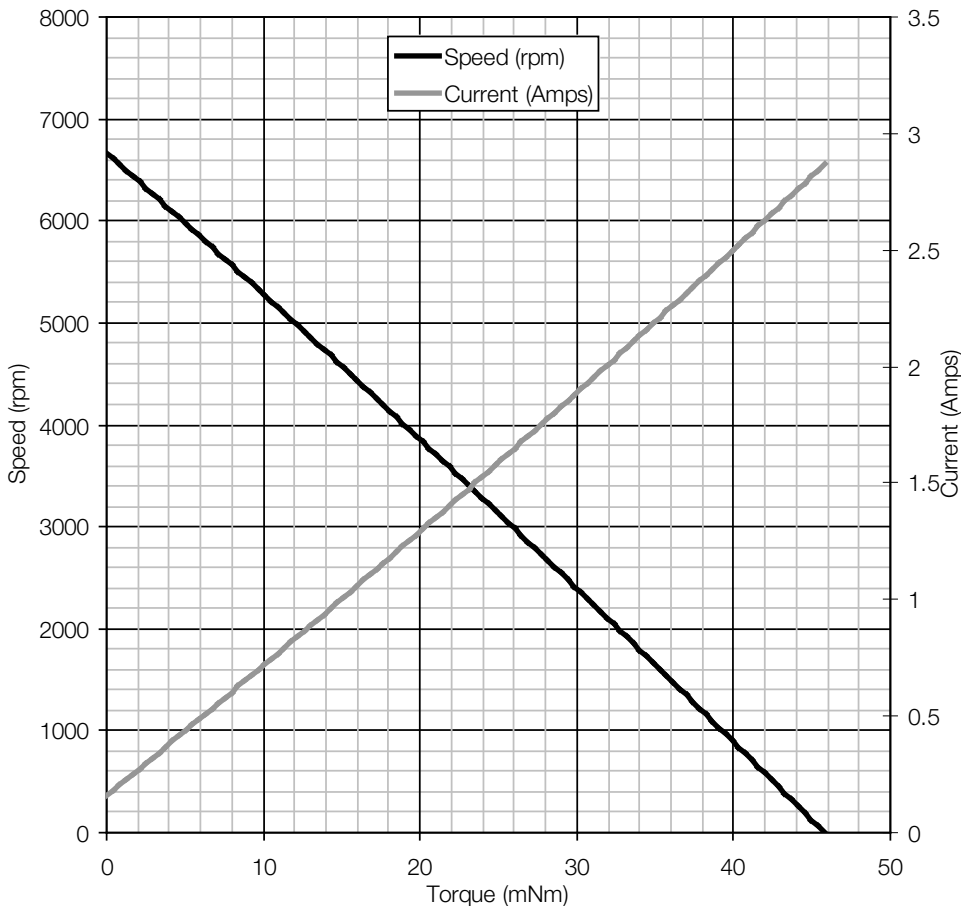
Issue 02



| Model Number | Performance | | | | | | | | | |
|--------------|-------------|-----------|-----------|--------------------|-----------|------------|----------|------------|-----------|-------------|
| | Volts V | No Load | | Maximum Efficiency | | | | Stall | | Max Power W |
| | | Speed rpm | Current A | Speed rpm | Current A | Torque mNm | Output W | Torque mNm | Current A | |
| RE1825-1204 | 12 | 6805 | 0.10 | 5535 | 0.61 | 8.2 | 4.7 | 45.7 | 2.86 | 8.1 |

Performance characteristics and general specification are measured from sample motor.

Characteristics



General Specification

| | |
|-----------------------|----------------|
| Bearings | Sintered |
| Brushes | Precious Metal |
| Rotation | Bi-directional |
| Number of poles | 6 |
| Operating voltage | 8 V to 13 V |
| Nominal resistance | 3.6 Ω |
| Typical detent torque | 1.6 mNm |
| Suppression | Ring Varistor |
| Weight | 32 g |

Contact:

www.rotalink.com
info@rotalink.com
 T: +44 (0)1460 72000
 F: +44 (0)1460 74278

Rotalink Limited
 Cropmead, Crewkerne
 Somerset TA18 7HQ, UK

www.rotalink.com