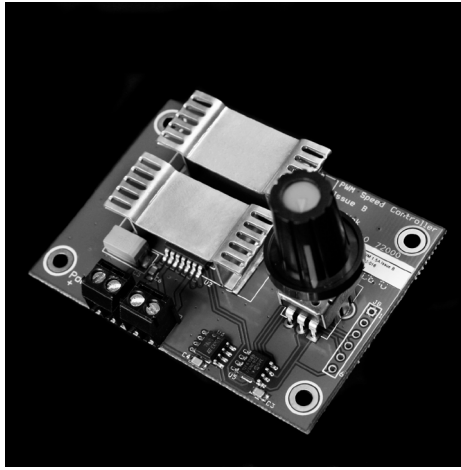


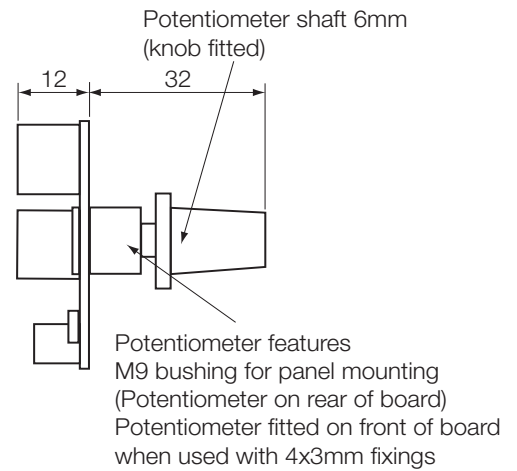
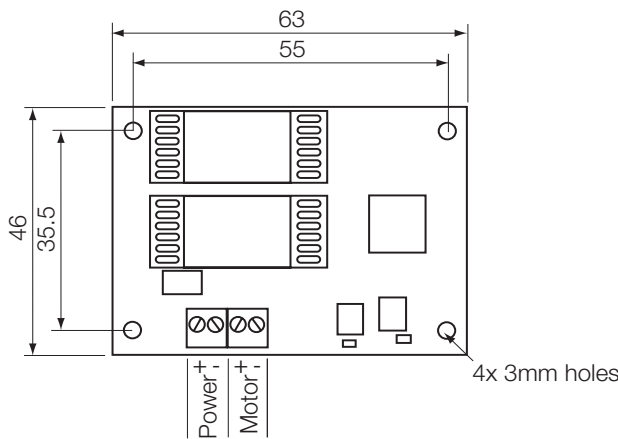
Control of DC Motors

Speed Controller

Issue 01



Rotalink
Miniature Motors, Transmission and Control



An open loop Pulse Width Modulated speed and direction controller for use with brushed dc motors up to 1.5A.

Using the on board potentiometer it is easy to adjust direction and speed; with the potentiometer set full CW the motor turns clockwise at full speed, simply rotating the potentiometer to full AC will rotate the motor anticlockwise at full speed. Positioning the potentiometer at 50% will stop the motor.

Operating from a 7-24Vdc input voltage this controller uses PWM adjustment running at 20Khz to provide high quality speed control. The motor will see an average voltage proportional to the duty cycle it is receiving.

The Speed Controller has a small footprint measuring just 63x46mm.

General Specification

Min Input	7Vdc
Max Input	24Vdc
Weight	50 gms approx.
Loading	1.5 Amps continuous
Connection	Screw terminal connectors up to 18AWG

Contact:

www.rotalink.com
info@rotalink.com
T: +44 (0)1460 72000
F: +44 (0)1460 74278

Rotalink Limited
Cropmead, Crewkerne
Somerset TA18 7HQ, UK

www.rotalink.com