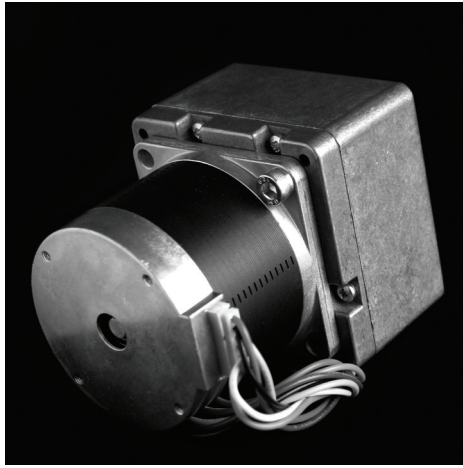


# Gearboxes

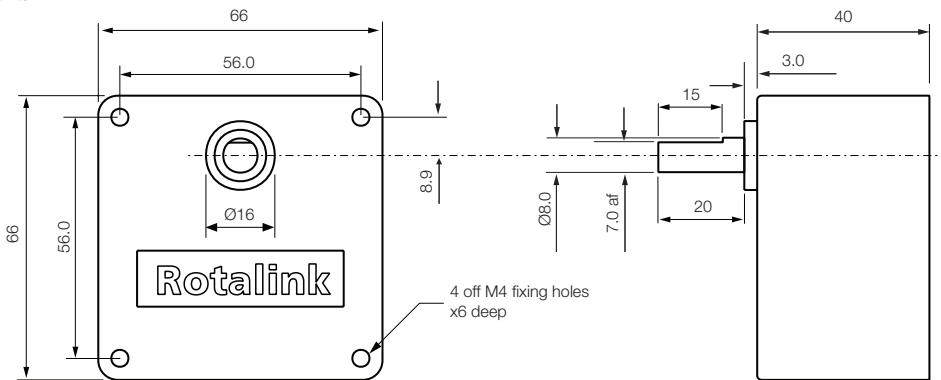
SQ40

Issue 03



**Rotalink**  
Miniature Motors, Transmission and Control

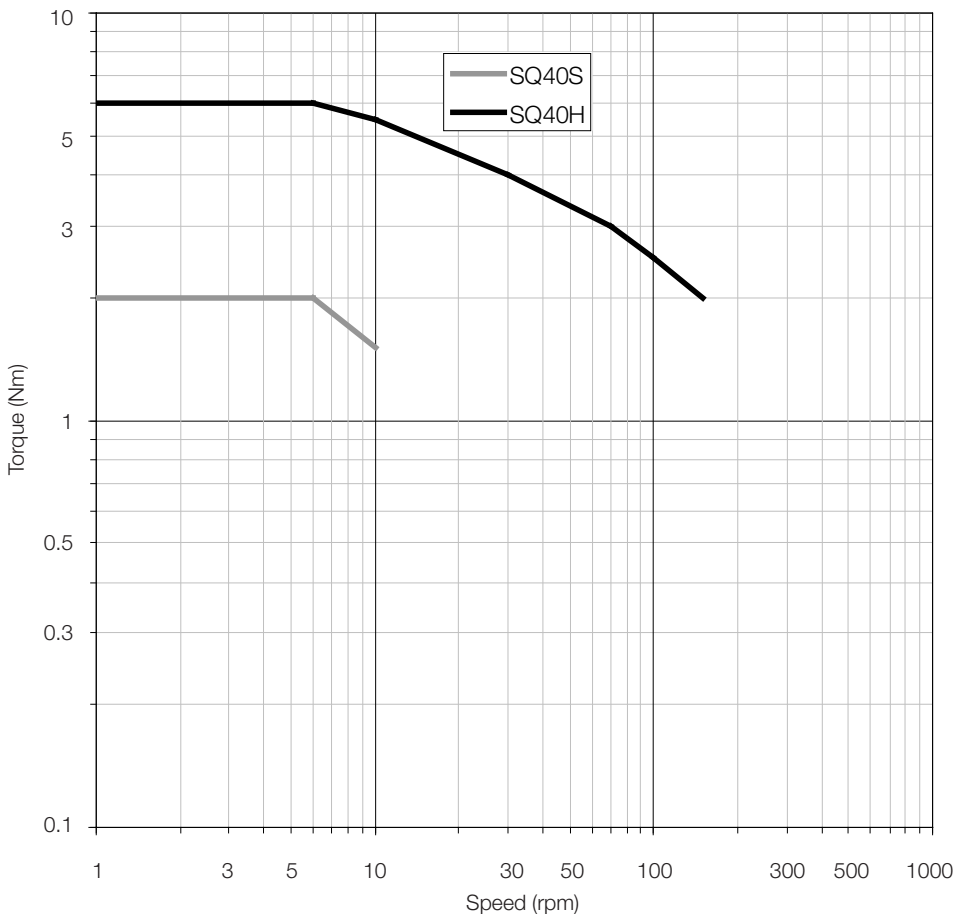
Units: mm



## Typical Ratios

5:1	100:1	1000:1
12.5:1	250:1	1250:1
25:1	500:1	2000:1
50:1		

## Characteristics



## General Specification

Zinc plated pressed steel gearbox case and front cover. Acetal spur gears running on fixed steel spindles. Stainless steel shaft, sintered bronze front and nylon back bearing. Maximum temperature, 80°C at the gearcase.

## Gearbox Options

- Wide range of ratios
- Special shafts
- Ball race bearings
- SQ40H - hobbed steel gears - 6Nm
- SQ40S - sintered steel gears - 2Nm

### Contact:

[www.rotalink.com](http://www.rotalink.com)  
[info@rotalink.com](mailto:info@rotalink.com)  
 T: +44 (0)1460 72000  
 F: +44 (0)1460 74278

Rotalink Limited  
 Cropmead, Crewkerne  
 Somerset TA18 7HQ, UK

[www.rotalink.com](http://www.rotalink.com)